



iSERIES  **CATALOGUE**

Technibel is a trademark of Nibe Energy System France used under license

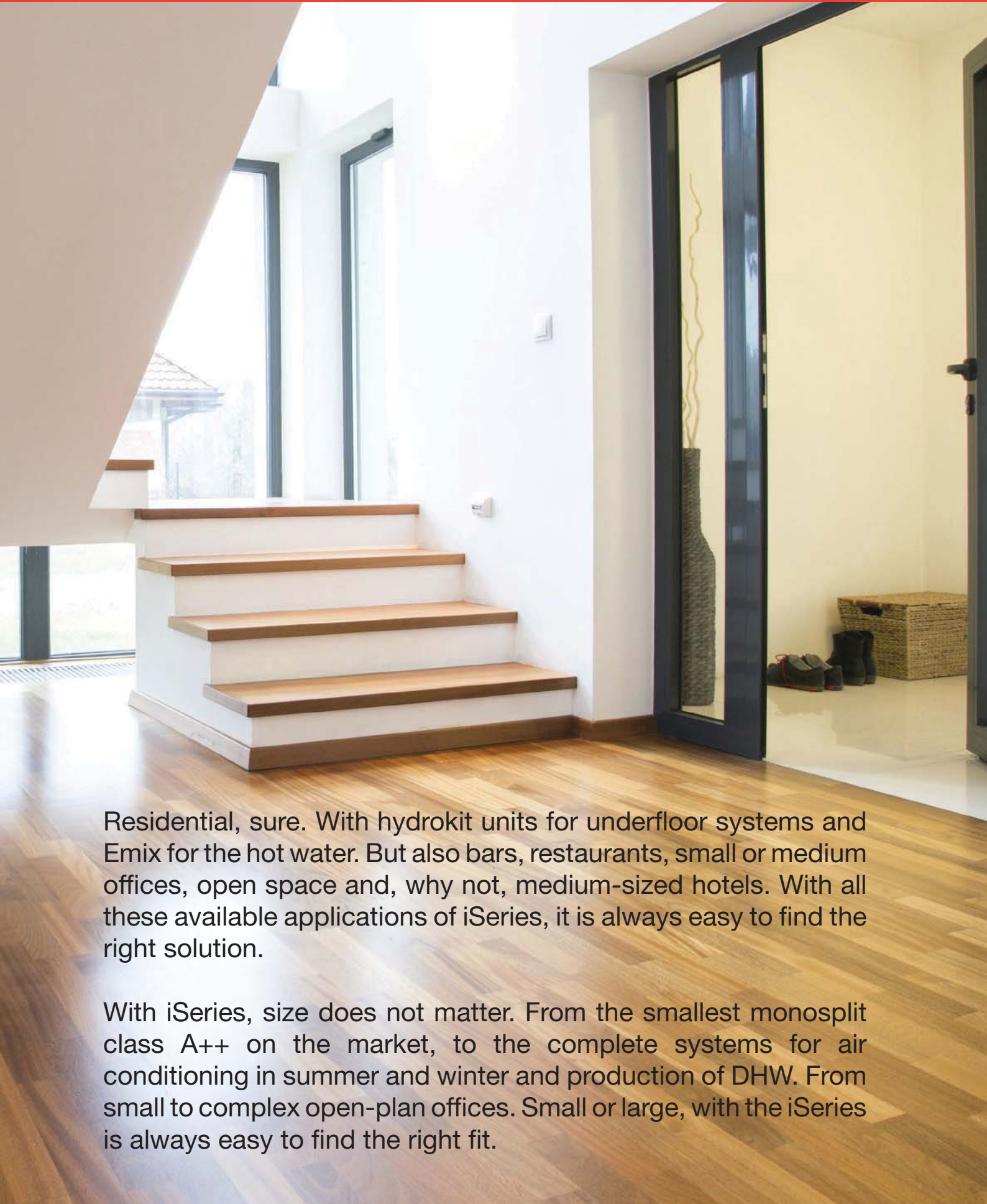
iSERIES
SOMETHING
DIFFERENT
BUT ITALIAN



HOME, OFFICE... FROM SMALL



TO BIG! ALWAYS iSERIES



Residential, sure. With hydrokit units for underfloor systems and Emix for the hot water. But also bars, restaurants, small or medium offices, open space and, why not, medium-sized hotels. With all these available applications of iSeries, it is always easy to find the right solution.

With iSeries, size does not matter. From the smallest monosplit class A++ on the market, to the complete systems for air conditioning in summer and winter and production of DHW. From small to complex open-plan offices. Small or large, with the iSeries is always easy to find the right fit.

MANY WAYS TO MANAGE YOUR iSERIES

All air-conditioner operating parameters can be controlled from the remote control: operating modes (auto or cooling only, heat pump only, dehumidification only, fan only), 1h and 24h timer, setpoint temperature, room temperature reading, TiO₂ and electronic filter activation (where fitted), fan speed, flap oscillation for optimum air distribution in the room and economy or night functions. Many operations can be set automatically or managed when needed, including the deactivation of the LED indicators for those that prefer complete darkness at night.

Indoor set point from 10° up to 32° C

both in cooling and heat pump modes



"EASY Mode"

The new layout lets you simply and quickly choose the start up and the two operating modes, cooling and heating

WIRED Mode

The remote control may also be used as a wired command by simply removing the protection lid and connecting the communication cable to the indoor unit.

P.S. Contact your sales representative or check our website to have the updated list of compatibility between indoor units and wired support

THIS IS NOT A SIMPLE REMOTE CONTROL BUT AN INFRARED OR WIRED SYSTEM CONTROL WITH SEVERAL SPECIAL FUNCTION, PROVIDED WITH ALL THE UNITS

- Wide range of operation. The presence of a dual infrared transmitter ensures a very wide range of operation: just place the remote control where you like for "made-to-measure" comfort in that area.
- Built-in temperature sensor for iFeel operations.
- Wide display with graphic symbols and alphanumeric indicators.

• Doppio trasmettitore



Multi address

The remote control can be set to control four different units in an open space for unified control, or customised according to temperature, timer, operating mode, and all other functions.

One for all



One to One



"iFeel" Function

a comparative function that ensures optimum temperature settings based on the values read at the remote control sensor, the sensor in the indoor unit and the resulting ambient temperature stratification conditions, which are always different from one room to another.

"iFlap" Function

The air flow can be released into the room in an "intelligent" way based on whether the unit is set to heating or cooling mode, thanks to a special system that controls the oscillation of the horizontal.

"Hi Power" Function (turbo no limits)

when maximum power is required straight away.

"ECO" Function

Unlike the "Hi power" function, for those who want instant maximum power, this function may be activated to optimise the operation of the outdoor units and the ventilation by reducing consumption and noise, exploiting all the modulation capacities of the inverter units.

"Quite Night" Function

Turn Off Led display on the indoor units

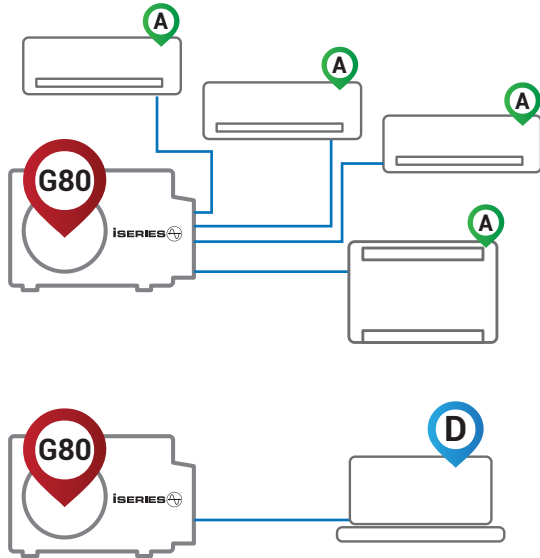
"RH% threshold" Function

Set the RH% value during Humidex and advanced dry mode

Wall mounted support

ISERIES VS THE OTHERS

SAME OUTDOOR FOR MONO AND MULTI



The same outdoor and indoor units can be used for residential and commercial applications. Different product lines no longer exist. A solution never seen before.

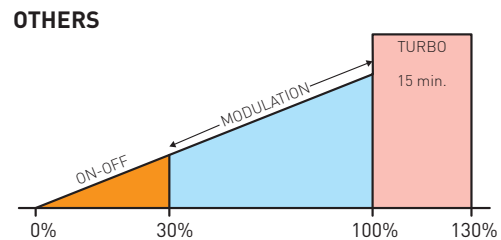
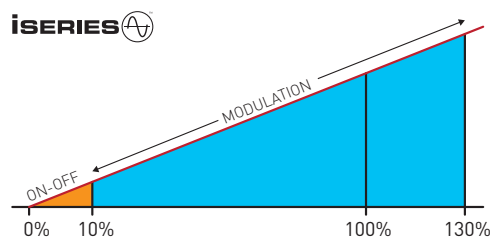
All the outdoor units of the iSeries range may be used in both mono-split (one indoor unit connected with an outdoor unit according to the selection tables) and multi-split configuration (several indoor units connected to an outdoor unit according to the selection tables) without any modification and/or without any special setting required.

Simply, the system adapts to the configuration automatically. This characteristic makes the iSeries unique in the market. As a matter of fact, all brands of air-conditioning systems propose the same indoor units for both mono-split and multi-split configurations (a feature which our units also have).

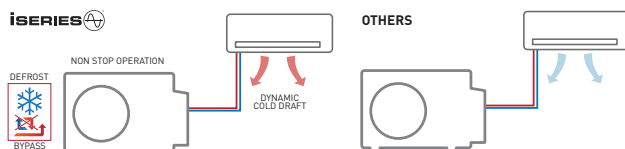
EXTENDED OPERATING RANGE



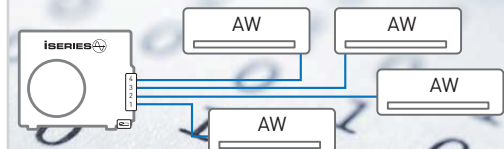
WIDER MODULATION



INTELLIGENT DEFROST



AUTOMATIC ADDRESS





Sophisticated and discreet even at maximum power

MP

5 in 1

Air Conditioner
Heat pump
Dehumidifier
Purifier
Fan

Model:

MPAFIA

Model:

MPA9FIB

Elegant and discreet, available in sizes A and B, an indoor unit to suit all tastes, suitable for all settings both in terms of design and heat output.

A



Dimensions: HxLxD 270x805x215 mm
Weight: 8 kg

B



Dimensions: HxLxD 285x995x240 mm
Weight: 12 kg



INFRARED+WIRE
included wired option

It consumes as a LED lamp and save over 70% than traditional units



MP

		MPA9FIA	MPA9FIB
Air flow rate I.U. (el.-l.-m.-h.)	m³/h	390-430-450-470	410-580-710-880
Dehumidification	l/h	1,5	2,0
Fan speed	n°	Auto + 3 remote control settings	Auto + 3 remote control settings
Sound pressure I.U. (el.-l.-m.-h.)	dB(A)	23-29-36-39	29-35-43-47
Electrical power supply	V/Ph/Hz	230/1/50	230/1/50
Power input max	kW	0,012	0,019
Type of motor	-	DC Motor Inverter	DC Motor Inverter
Liquid pipe diameter	mm (")	6,35(1/4")	6,35(1/4")
Gas pipe diameter	mm (")	9,52(3/8")	12,7(1/2")
Net weight I.U.	kg	8	12
Net dimensions I.U. (H./W./D.)	mm	270x805x215	285x995x240

Perfect white satin finishing

The casing for model **MP** is treated using a photo engraving technique to obtain a satin effect on the plastic, this is done during the injection stage and no further treatments are applied. You can see the quality of the material and manufacturing process used with the naked eye, this sets the **MP** unit apart from other white wall-mounted indoor units.



LED are boring, turn them off



Can be installed from 1.7 m



MP are ideals in rooms with a very low ceiling, thanks to the special anti-intrusion grids.

Active charcoal filters, always clean air

The optional activated charcoal filter is comprised of a layer of synthetic material folded to increase the filtering surface area and treated with a professional anti-bacterial solution, combined with an activated charcoal mesh. Activated charcoal is a material mainly made up of carbon in the form of graphite micro crystals treated in such a way as to create a porous structure with a vast internal

surface area. When the forced air flow passes through the filter element, the charge of static energy allows the filter to trap even the smallest particles of pollutants and allergens, down to a size of 0.01 microns. The activated charcoal layer attracts and absorbs the organic molecules responsible for unpleasant odours, eliminating them completely.

eco
friendly



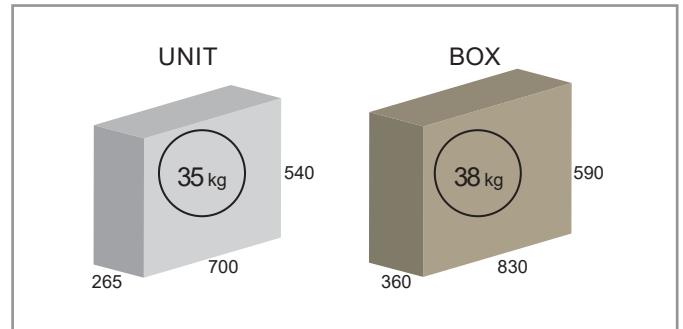
GR9FI 30 EMX

The smallest in A++ class also with DHW production

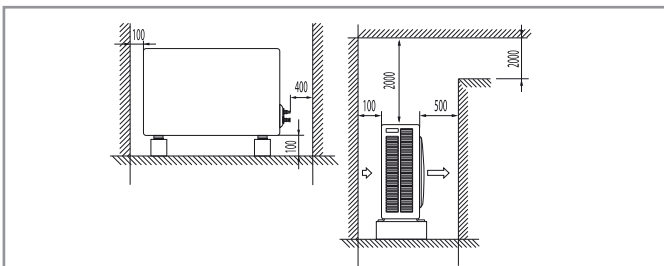
The smallest outdoor unit of the iSeries range, used with size A indoor units air/air in the following types: walls, floor, floor/ceiling, cassette and slim ducted. Compliant with ERP/Ecodesign

GR9FI30emx can be matched with an eMix or eMix tankto realize a split inverter system dedicated to the DHW production.

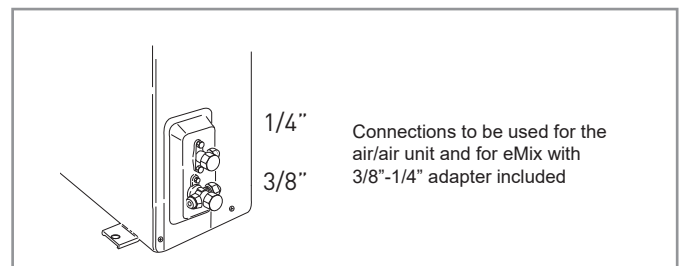
DIMENSIONS (mm)



MINIMUM OPERATION AREA (mm)



GAS CONNECTIONS



EXTENDED RANGE
-32°C | +50°C

UPDATE
FLASH MEMORY

CONNECTION
WEB CONTROL

AIR / AIR

ERP Ecodesign - EN14825

COOLING +35°C	Pdesignc	kW	3,6	A++
	SEER		6,2	
HEATING Average -10°C	Pdesignh	kW	3,2	A+
	SCOP		4,4	

ERP Ecodesign - EN14825 - Part Load

	35°C	30°C	25°C	20°C	12°C	7°C	2°C	-7°C	TOL
kW - kW	3,55	2,60	1,72	1,80	1,92	2,00	1,78	2,84	2,17
EER - COP	2,84	4,77	7,90	9,98	7,70	7,70	4,14	2,61	2,17

DHW ERP
See Emix

COOLING

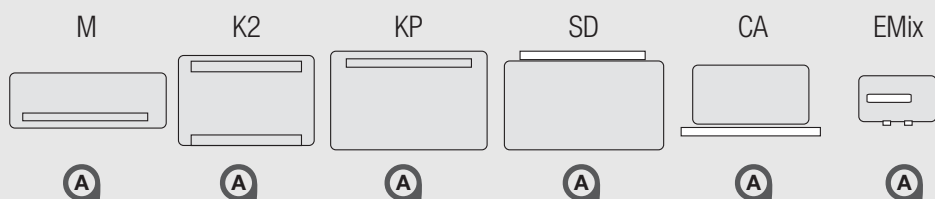
	CAPACITY kW	EER
+35°C UE / 27/19°C UI	Max 3,6	2,84

HEATING

	CAPACITY kW	COP
+12/11°C UE / +20°C UI	Max 4,5	4,1
+7/6°C UE / +20°C UI	Max 3,3	3,51
+2/1°C UE / +20°C UI	Max 2,7	2,40
-7/-8°C UE / +20°C UI	Max 2,8	2,61
-10/-11°C UE / +20°C UI	Max 2,7	2,43

UNI 11300-4 - Full load maximum power

MATCHINGS



Power supply	V/Ph/Hz	230/1/50-60
Power Input (max.)	W/A	1550/ 6,90
R410A standard refrigerant charge	kg	0.81
Compressor Type		Single Rotary
Fan speed		Auto
Sound pressure (max.)	dB(A)	40

Liquid Pipe	mm(inch)	6,35 (1/4")
Gas Pipe	mm(inch)	9,52 (3/8")
Total length of pipes (standard load)	m	7,5
Total length of pipes (additional load)	m	15
Maximum height difference (total)	m	10